

PHASE ONE CONSULTATION

Share your feedback

South Brooks
Solar Farm 

18 September – 30 October 2025

Thank you for taking the time to share your views on our early plans and proposals for South Brooks Solar Farm.

How to respond to our consultation

This questionnaire is designed to be used once you have read about our proposals in the consultation booklet. You can answer as many or as few questions as you like and are welcome to use the additional space at the end of the questionnaire to provide further feedback.

You can respond to the consultation by:

- Completing this questionnaire online:
www.southbrookssolarfarm.co.uk
- Posting this questionnaire or submitting your comments (no stamp required) to:

South Brooks Solar Farm
FREEPOST SEC NEWGATE UK LOCAL

- Submitting your comments or a completed questionnaire by email to:
info@southbrookssolarfarm.co.uk

All responses must be received by the consultation deadline of **11:59pm on 30 October 2025**.

We will consider all the feedback that we receive, alongside our environmental assessments and continue to develop our plans for South Brooks ahead of the next stage of consultation (expected early Summer 2026).

Part 1: Our early proposals

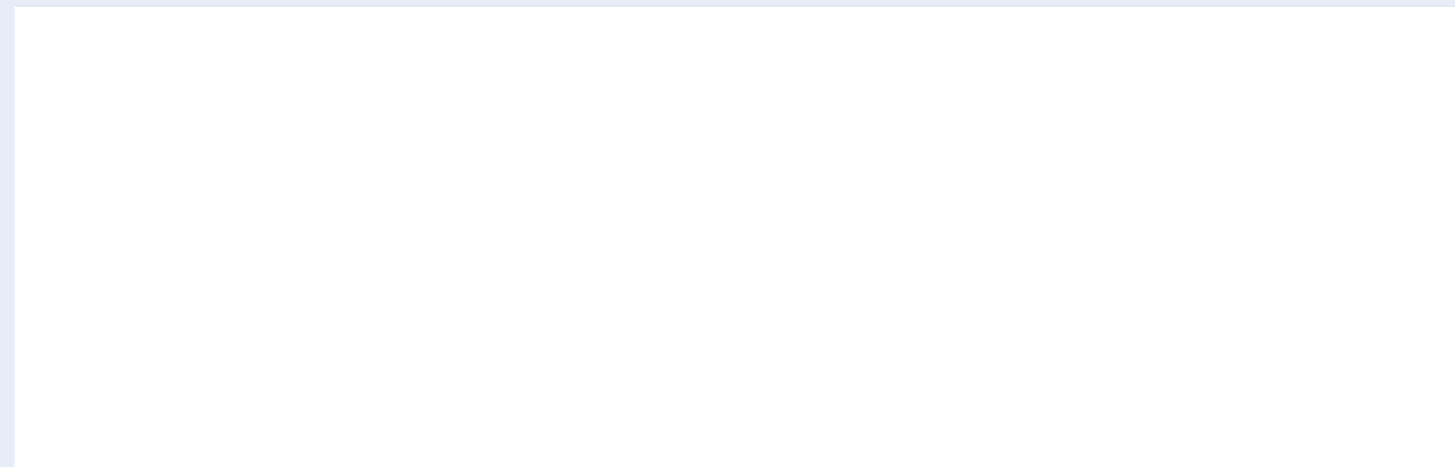
As part of this consultation, we are seeking your feedback on where different elements of South Brooks would be suitable, including areas for solar panels, as well as the potential location of battery storage and project substation.

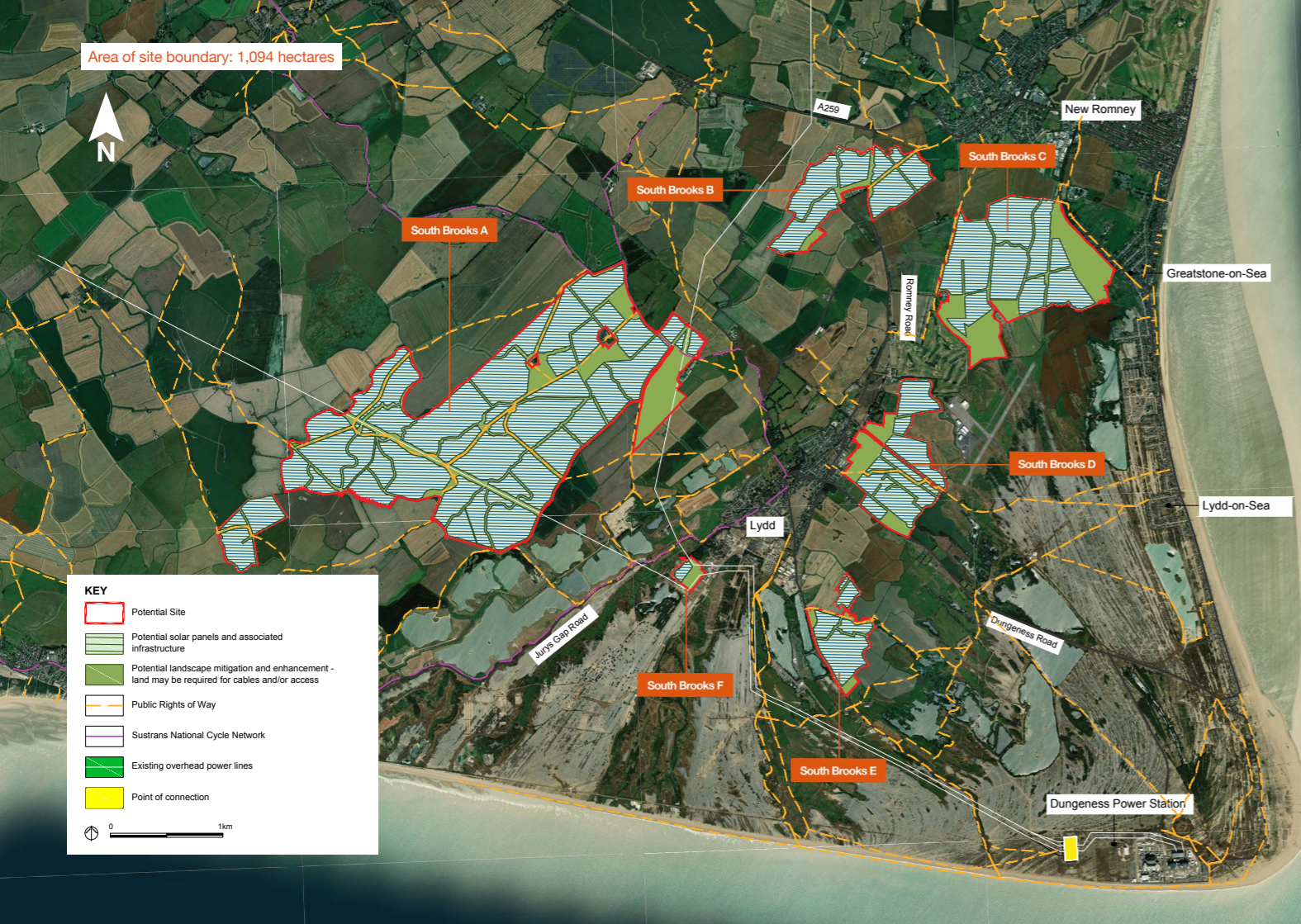
At this early stage of the process, we have developed principles which will guide the design of South Brooks Solar Farm. These are available to view in the consultation booklet.

On the next page, you will find a map labelled with different sections (A, B, C, D, E and F). You can provide feedback on a specific location or the whole site. If you are providing feedback that is specific to a location, please indicate which section of the map you are referring to where possible.

Q1: Do you have any comments on the potential location of South Brooks Solar Farm?

Please refer to specific areas within the site wherever possible.





We understand that this is a unique area with special environmental designations. We are committed to designing South Brooks in a way which respects and, where possible, enhances this rich environment. We will be carrying out an Environmental Impact Assessment (EIA) to assess any potential effects. These assessments will look at a range of topics such as ecology, cultural heritage, visual impact and flood risk amongst others.

Our early design shows the areas within the site we are considering for landscape and ecological enhancements. As well as protecting existing habitats, we also want to enhance and improve biodiversity across the site. This could include expanded ditch-side habitats, new grasslands, field margins, and beetle banks to create new habitats for native species. We are also considering ways that we could improve the existing footpath network.

Q2: Are there any landscape or ecological enhancements you think we should include as part of the proposals?

Empty response area for user input.

Q3: Do you have any suggestions for how we could improve the current network of Public Rights of Way to create a better experience for users?

Where possible, please specify the locations of the Public Rights of Way to which your comments refer.



Q4: Do you have any local knowledge or further information about the area and environment which you think we should take into account?

This could include how you use the local footpath network, information about the local road network, and the types of wildlife you see using the area.



Part 2: Working with the local community

We recognise that the construction and operation of solar farms can affect the communities around them. Wherever we operate, we also give something back to the local community. All our onshore wind and solar sites in the UK have a dedicated community fund to spend on improvements in the local area.

Q5: Do you have any ideas you would like to share about how South Brooks Solar Farm could support local community initiatives?



Feedback from this consultation, along with the results of our ongoing environmental surveys and technical work, will help us to refine our proposals for South Brooks. We will present our plans for your further feedback next year (expected early Summer 2026)

Q6: Please share any topics you would like more information on as part of our next consultation, or suggestions for the consultation itself.



Please leave any further comments or suggestions you have.



Please leave any further comments or suggestions you have.



About you

If you would like to be kept updated on this project, please provide your contact details below.

If you'd prefer your comments to be anonymous, please provide us with your postcode so we can understand where you live in relation to South Brooks Solar Farm.

Name:

Address:

Email:

Are you responding on behalf of an organisation?

Yes

No

If yes, please provide the name of the organisation and your role within it.

Organisation:

Role:

Any comments received will be analysed by South Brooks Solar Farm and any of its appointed agents. Copies may be made available in due course to the Secretary of State, the Planning Inspectorate and other relevant statutory authorities so that feedback can be considered as part of the DCO process. We will request that any personal details are not placed on public record and will be held securely by South Brooks Solar Farm and its agents in accordance with data protection law. It will be used solely in connection with the consultation process and subsequent DCO application and, except as noted above, will not be passed to third parties.