



**South Brooks Solar Farm
Webinar - Taking part in the
consultation process
May 2026**

South Brooks
Solar Farm

Agenda

- Introduction and housekeeping
- Phase One Consultation
- Developing the approach to consultation
- Phase Two Consultation
- Responding to the consultation
- Q&A

South Brooks
Solar Farm

Housekeeping

- All questions should be submitted via Q&A function of this webinar.
- Please ensure that your questions are on the webinar topic.
- Unless asking for a clarification, questions will be taken following the presentation in the dedicated Q&A part of the webinar. However, you are welcome to submit questions during the presentation.
- This webinar is being recorded for the purposes of reporting on the consultation and providing summaries of the Q&A discussion.
- The slides from this webinar will be available on the project website (www.southbrookssolarfarm.co.uk), along with a summary of the Q&A discussion, following the webinar.

How to use the Q&A function to ask a question

1. Click the Q&A button on the bottom toolbar.
2. Submit Question: Type your question into the text box.
3. Anonymity: Check the "Send Anonymously" box if you do not want your name attached.
4. View Answers: The Q&A window will show your question, replies, and if the moderator plans to "answer live."

Introduction



South Brooks
Solar Farm

Objectives of consultation

Public consultation is a process that involves the public providing their views and feedback on a proposal to consider as part of the decision-making process.

We are committed to making sure that everybody has the opportunity to understand and provide their feedback on the proposals for South Brooks. The key objectives for achieving this through pre-application consultation are:

- Ensure thorough, open and transparent engagement and consultation on the proposals.
- Provide sufficient opportunities for interested parties to understand, provide feedback on and influence the proposals.
- Gather high quality responses to, and feedback on, the plans to help inform proposals ahead of submission of the DCO application.
- Deliver a consultation that is best practice for a DCO application.

Common misconceptions about public consultation

It's a done deal / there is no point in responding to the public consultation as it is a tick box exercise.

- We conduct multiple phases of consultation before the design is fixed so that public comments can genuinely inform the plans.
- Changes since Phase One Consultation include a 20% reduction in areas proposed for above-ground development.

This is the last chance that the public has to comment on the plans.

- While this is the last formal public consultation we are proposing to hold on the plans, there are lots of opportunities to comment on the application we will submit as part of the examination.
- This includes making comments in writing to the Planning Inspectorate and speaking at public hearings which take place in local venues.

Commenting on the proposal means that you support it.

- Engaging with the consultation and providing your feedback on specific aspects of the proposals does not undermine your overall position on the project.

Phase One Consultation



South Brooks
Solar Farm

Phase One Consultation - Activity

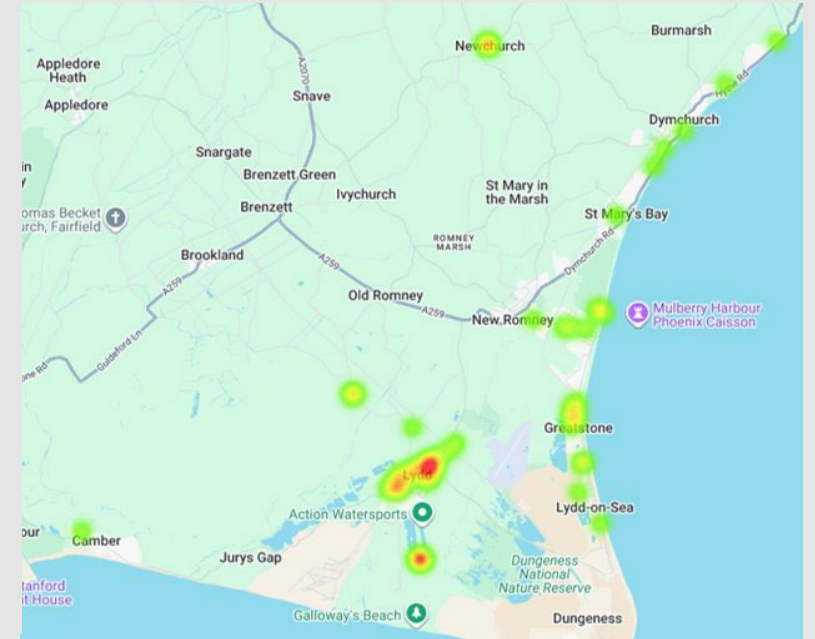
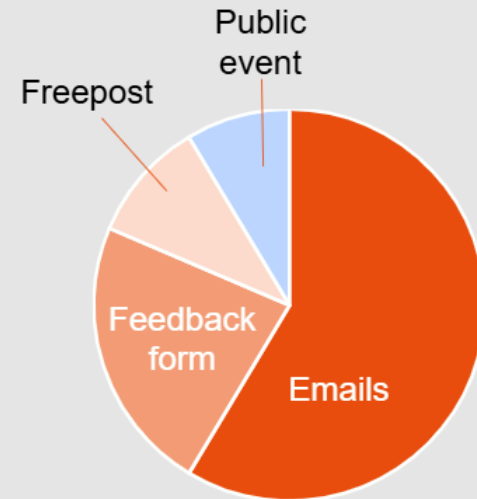
We consulted on our early plans for South Brooks between **18 September – 30 October 2025**.

- **Door knocks:** We spoke to nearest neighbours to South Brooks before launch.
- **Newsletter:** A newsletter sharing information about South Brooks and the consultation was sent to over 8,500 properties in the area.
- **Website:** Information was made available through the website. This included the consultation booklet and exhibition boards.
- **Deposit point:** Consultation booklets and questionnaires available to pick up from Romney Marsh Community Hub.
- **Public events:** Held five events in Lydd, New Romney, Littlestone and Camber. Extra drop in event held at Dungeness B for power station staff.
- **Advertising:** Promotion of the consultation took place using advertising on social media, local newspapers (print and digital) (Folkestone & Hythe Express, Sussex Express, The Looker) as well as issuing a press release.



Phase One Consultation - Outcomes

- 19 meetings held including near neighbours, RSPB other developers, Kent Community Foundation, Environment Agency, Kent FRS, Natural England, Lydd Airport.
- 367 attendees across five events
- 78 enquiries on project communication channels
- 99 responses received including:
 - British Horse Society
 - CPRE
 - Hands Off Our Marsh
 - Kent Wildlife Trust
 - National Grid
 - National Highways
 - Maritime and Coastguard Agency
- Coverage in The Looker, Camber Community News, Kent Online, Rye News, ITV Meridian, Sussex Express, Folkestone & Hythe Express, Solar Power Portal, reNews, internal newsletter for Dungeness B staff.



Feedback on the Phase One Consultation



Scope of the consultation

Requests for more information on environmental assessment process and how the solar farm would be managed.

Request for certainty on different elements of the solar farm such as battery storage location and cabling.



Consultation techniques and materials

Requests for information to be presented in a range of accessible formats including use of imagery and concise documentation.

A range of in-person and virtual techniques should be used.



Consultation publicity

Request to work with local organisations, and bodies representing seldom heard groups, to ensure maximum reach.

Feedback on the Phase One Consultation



I would like more information on the following topics:

- *Health and wellbeing assessment*
- *Access and active travel*
- *Biodiversity*
- *Visual and noise mitigation*
- *Governance of Community Fund*
- *Battery storage safety*
- *Construction process*
- *Decommissioning*
- *Water management*
- *Job creation*

When questions were raised the answers were all too often – “that’s still to be decided” and “this is just a preliminary and we haven’t thought that particular aspect through yet”.

Location of the battery storage

“I propose you could improve by offering more detailed information such as the parcels of land intended for use, and entrances to them.”

Opportunity to review draft photomontages, glare models, LVIA and flood maps.

A detailed breakdown, please, of the quality categories of the farmland you are proposing to cover.

I’d like more information on how biodiversity and landscape impacts will be managed and monitored over time.

Feedback on the Phase One Consultation



Many residents noted that the EDF representatives did not take notes at the events of points that were raised by them and questioned whether the consultation is in fact purely a tick box exercise.

One-to-one technical briefings for those of us within the boundary.

Offer online and in-person options — e.g., a virtual exhibition or feedback form.

Continue to hold consultation events at different times and venues (e.g., daytime and evening, town and rural locations).

Provide accessible materials: plain-language summaries, easy-read versions, large-print maps, and short explainer videos.

Provide a comment map (digital or physical) where people can pin ideas for PRow (public rights of way) improvements, habitat areas, or screening preferences.

Use photomontages from key viewpoints, so residents can visualise the changes from familiar spots.

Host Q&A sessions with topic experts (ecology, landscape, energy).

Providing short, plain-language summaries and feedback options online and offline will help ensure the process is accessible and inclusive.

Feedback on the Phase One Consultation



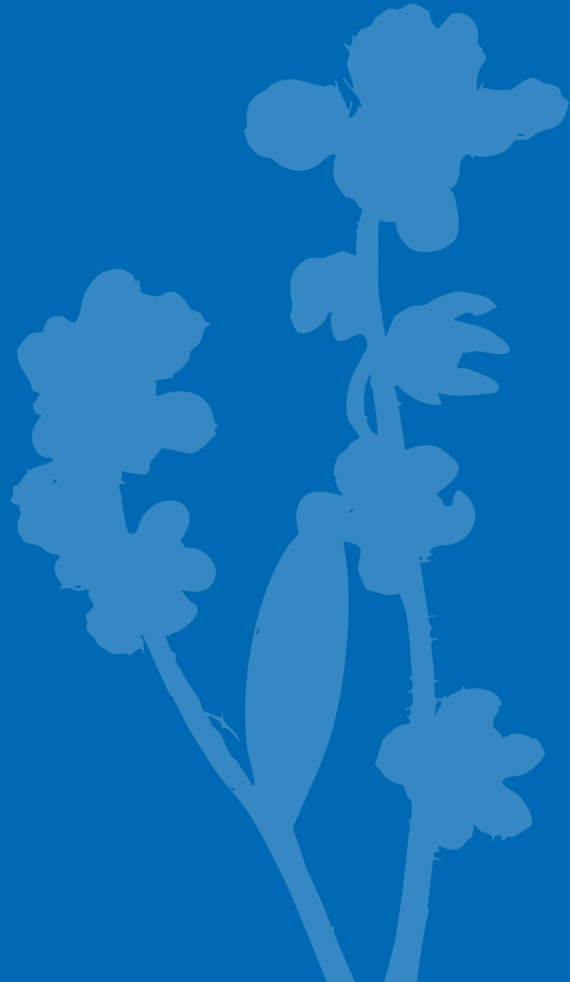
We encourage a greater focus on reaching those who are less likely to attend formal exhibitions — for example, through outreach to local schools, GP practices, care settings, parish councils and community centres.

There was also a general feeling that not enough was done to publicise the events, and that, were it not for Hands Off Our Marsh, many residents would have been unaware.

Hands Off Our Marsh requests that EDF work closely with us to ensure appropriate communication plans are put in place that ensure all relevant stakeholders are fully aware of future consultation plans, timings and events.

Publish summary reports showing how community feedback influenced design changes (“you said / we did”).

Developing the approach to Phase Two Consultation



Developing our approach to consultation

The following meetings have informed the approach to consultation:

- Hand Off Our Marsh
- Rother District Council
- Folkestone & Hythe District Council
- Kent County Council
- East Sussex County Council
- Romney Marsh Forum
- Tony Vaughan MP

Key changes made in response to feedback we have received:

- Webinar focusing on the consultation process
- Running of the public events to reflect comments on technical expert identification and recording of verbal feedback.
- Door knocking for nearest neighbours.
- Facebook and LinkedIn advertising to be more targeted to inner zone.
- Coordination with HOOM on sharing information about the consultation on its channels.
- Suggestions for poster placements, deposit points and key groups to engage.
- Adjustments to the inner zone of consultation and publicity for wider Romney Marsh.

Phase Two Consultation



South Brooks
Solar Farm



Timing

- The six-week consultation period is running between 28 May and 11:59pm on 9 July 2026

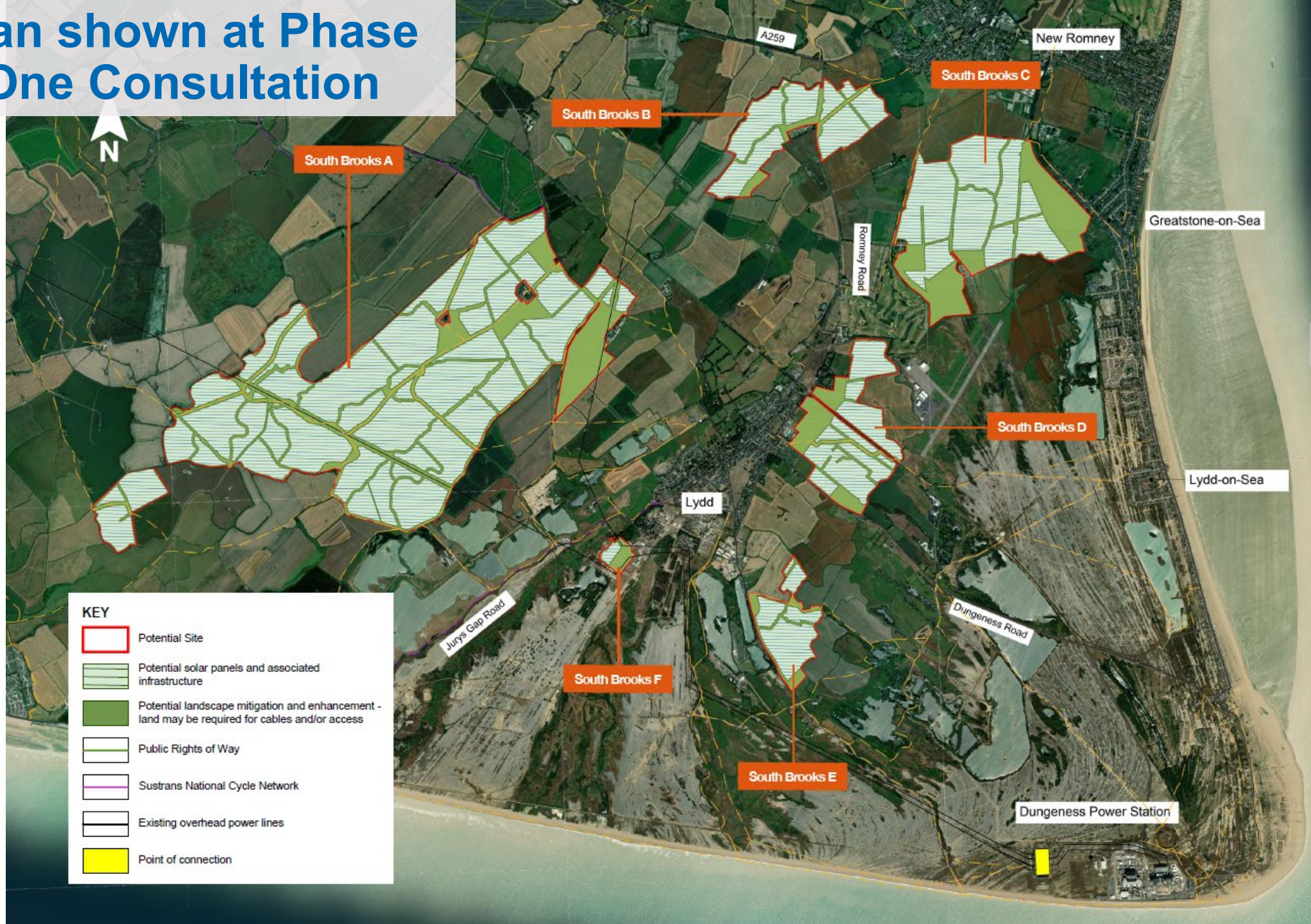
Scope of the consultation

- The design of South Brooks, including the potential location(s) of each of its elements and proposed environmental enhancements and mitigation.
- Preliminary information on environmental assessments – information about the potential likely significant effects of the Project and preliminary details on potential mitigation measures to avoid, prevent, reduce or, if possible, offset these.
- How South Brooks could contribute to the local community, including the development of a community benefit package.

Changes made to the design since Phase One Consultation











Plan shown at Phase One Consultation

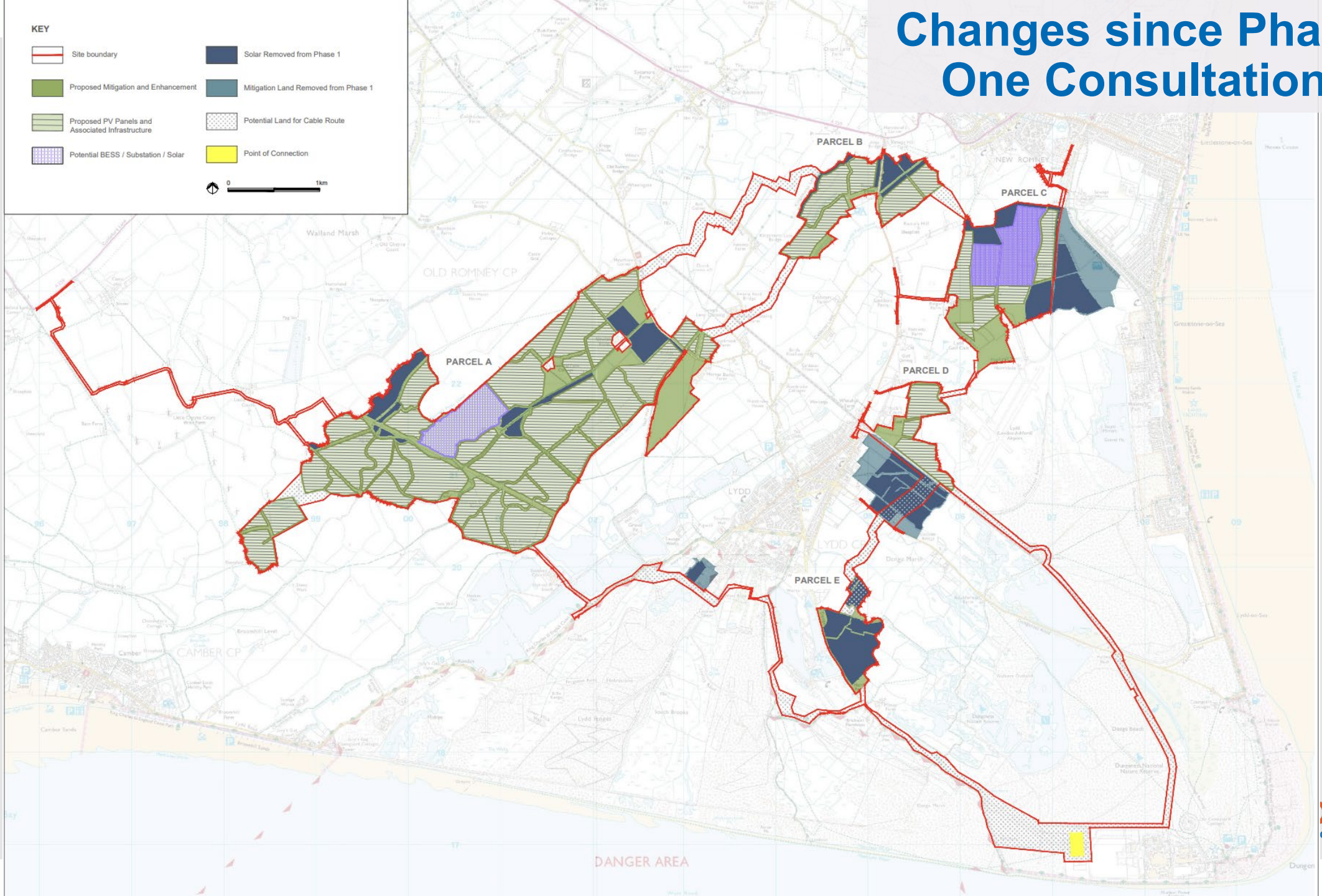


Changes since Phase One Consultation

KEY

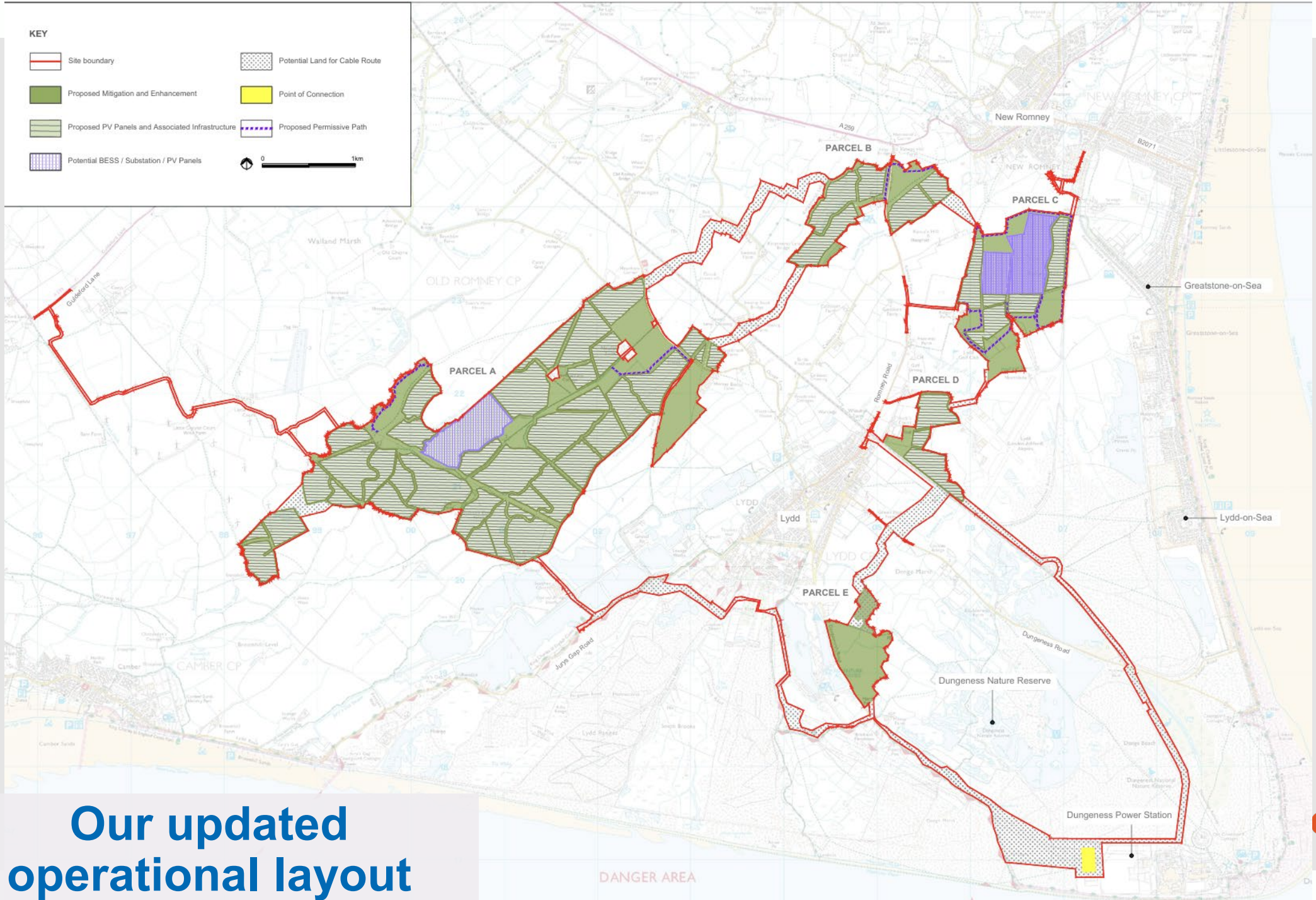
 Site boundary	 Solar Removed from Phase 1
 Proposed Mitigation and Enhancement	 Mitigation Land Removed from Phase 1
 Proposed PV Panels and Associated Infrastructure	 Potential Land for Cable Route
 Potential BESS / Substation / Solar	 Point of Connection

0 1km



KEY

- Site boundary
- Potential Land for Cable Route
- Proposed Mitigation and Enhancement
- Point of Connection
- Proposed PV Panels and Associated Infrastructure
- Proposed Permissive Path
- Potential BESS / Substation / PV Panels



**Our updated
operational layout**



Consultation materials and techniques



Accessing consultation materials

Consultation
website

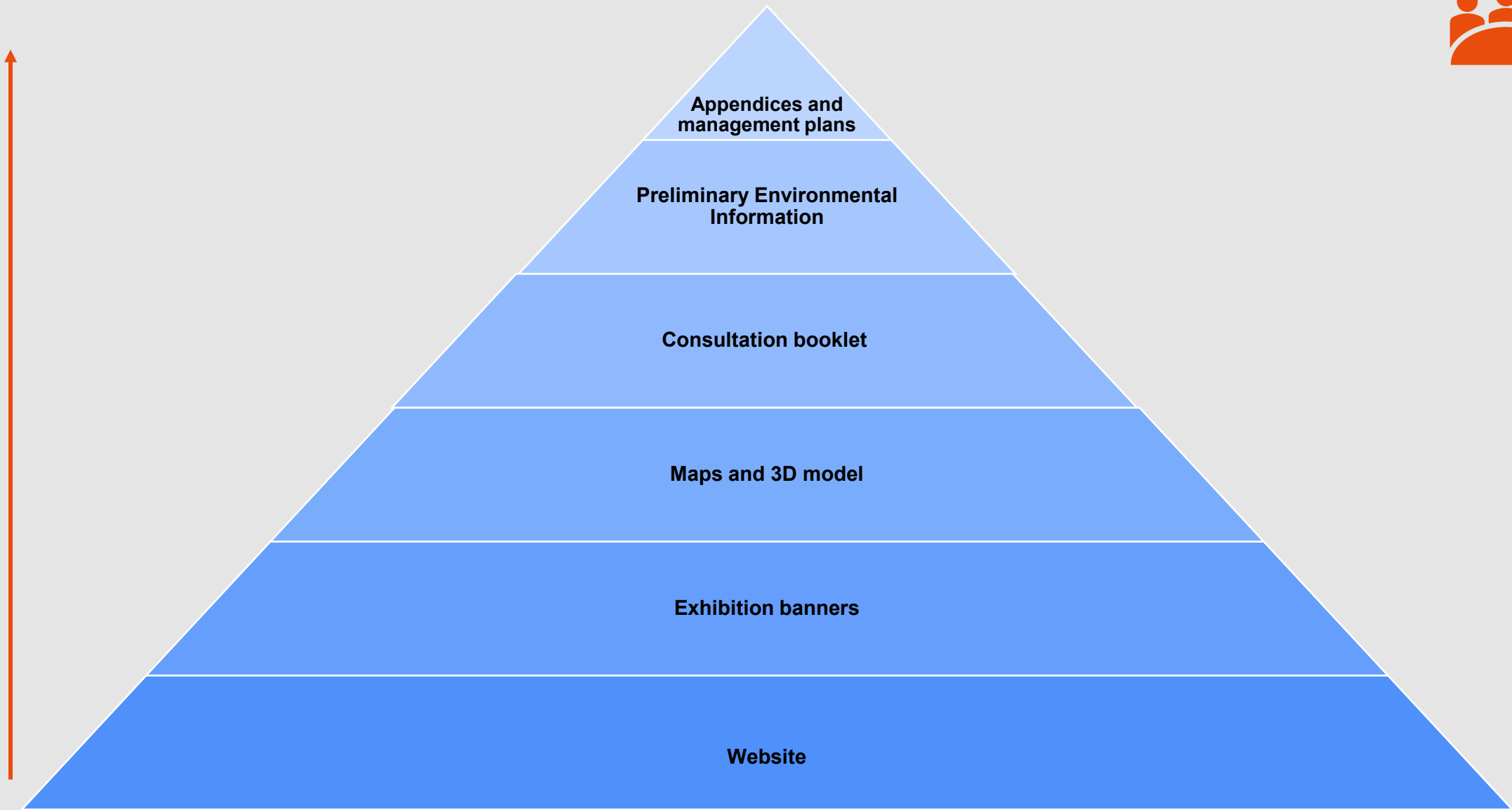
Deposit
points

Public
events

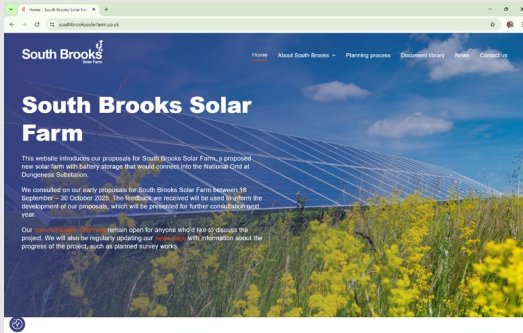
Through
comms
channels



Technical detail



Consultation materials



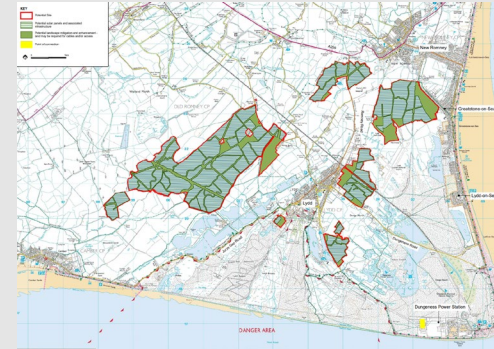
Consultation website

A summary of the project will be on the website alongside information about the consultation.



Exhibition banners

Banners on display at the public events and can be downloaded online. A summary of the consultation booklet.



Maps

Maps at different scales and showing different elements



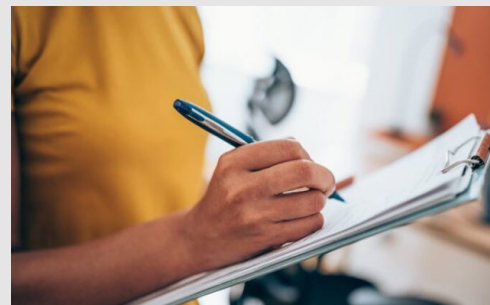
3D model

A model of the proposals on display at public events which can be toggled on and off.



Consultation booklet

A 36-page summary document of the proposals and key environmental information, written for a general audience.



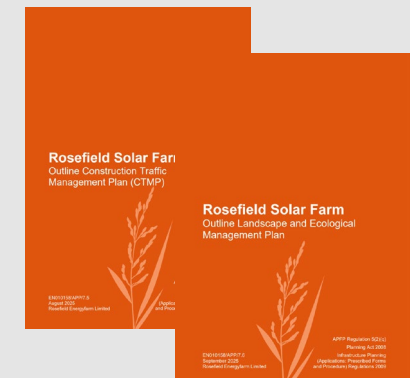
Preliminary Environmental Information

Preliminary environmental report (approx. 450 pages).



Technical appendices

Appendices on key environmental topics underpinning the PEI (approx. 200 pages)

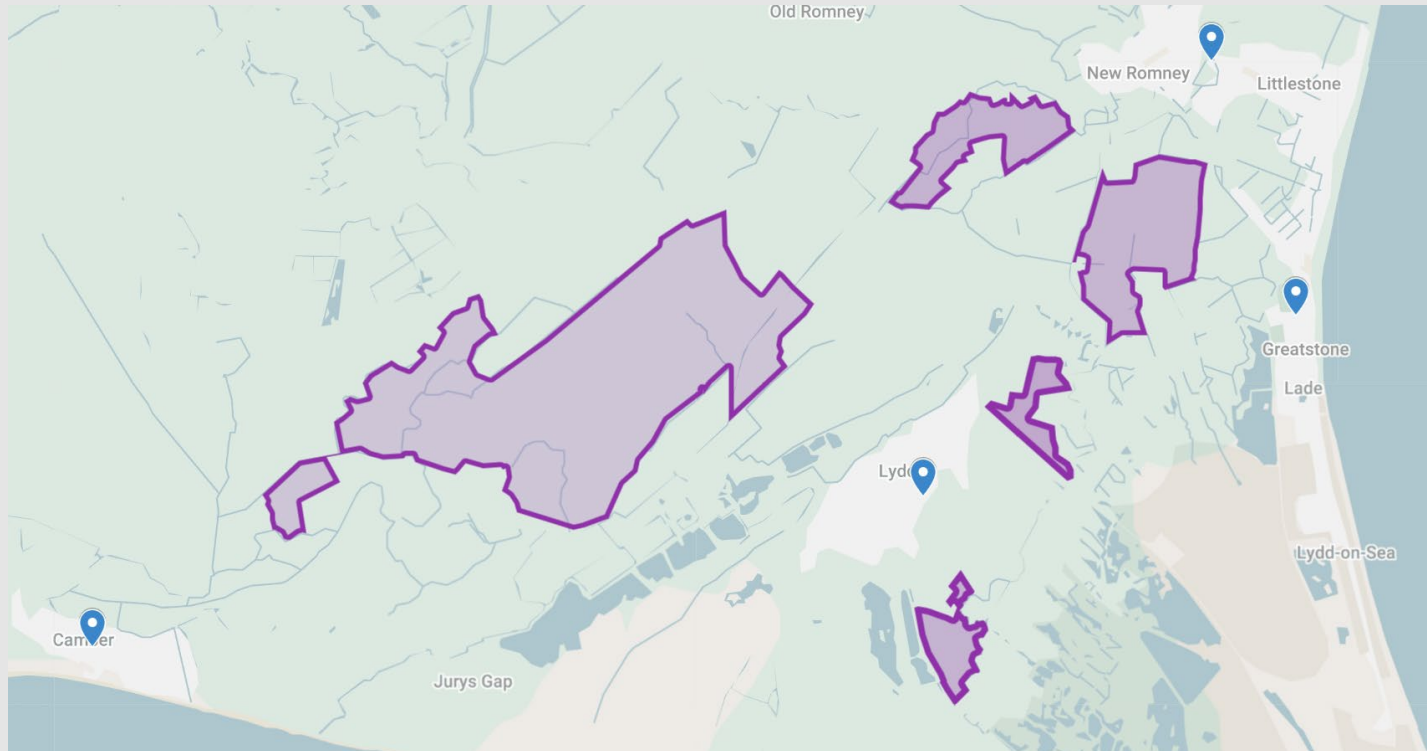


Draft management plans

Plans which set out how the Application would be enforced (usually available at Application)



Consultation techniques – public events



Thursday 11 June (1pm - 5pm)

Lydd Community Hall, Manor Road TN29 9HU

Friday 12 June (4:30pm - 8:30pm)

St Peter's Church, Baldwin Rd TN28 8RG

Saturday 13 June (11am - 3pm)

Maude Community Centre, Station Rd TN28 8LQ

Friday 3 July (4pm - 7pm)

Camber Memorial Hall, Lydd Rd, TN31 7RJ

Saturday 4 July (11am - 3pm)

Lydd Community Hall, Manor Road, TN29 9HU

Information

- Public events held in weeks 2 and 5 of the consultation period across different times, dates and locations.
- Events will have the exhibition banners, copies of consultation booklet, questionnaire, PEIR and appendices, large-maps and 3D model.
- Events to be staffed by members of the project team and representatives from EDF power solutions and PS Renewables.



Consultation techniques – technical webinars



- All webinars take place between 6-7pm on the above dates via Zoom.
- Each environmental webinar will cover the approach to assessment, findings so far and work which will be undertaken ahead of the Environmental Statement.
- To register, please visit the project website: www.southbrookssolarfarm.co.uk, where slides will be available afterwards.

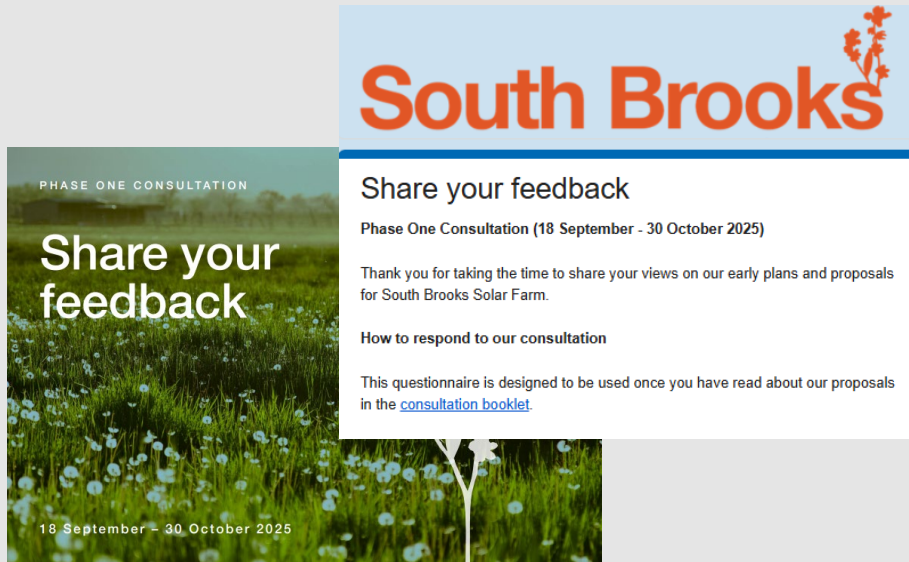
Webinar	Date
Taking part in the consultation	28 May
Water	4 June
Transport	9 June
Landscape and visual	17 June
Battery safety	18 June
Soils	25 June
Ecology	1 July

Responding to the consultation



Responding to the consultation

Written feedback is the primary way we collect information about public views on the project.



Questionnaire

Digital and print – asks for feedback by questions

Send

From

To |

Cc

Bcc

Subject

Freeform

Letters and email – no format.

Using the questionnaire

The questionnaire has been designed to help respondents share comments on the different parts of South Brooks.

Q1: Do you have any comments on the updated operational layout of South Brooks Solar Farm?

Q2: Do you have any comments on the proposed routes for the interconnecting cables or the grid connection corridor?

Q3: Do you have any comments on the permissive paths we have proposed, or suggestions for any other permissive path routes within the Site boundary?

Q4: Do you have any comments on the proposals to deliver environmental enhancements, such as new planting and creation of wildlife habitats?

Q5: Do you have any comments on our ongoing assessment of potential environmental effects?

Q6: Do you have any comments on our approach to managing the effects of building South Brooks, including movement of construction vehicles?

Q7: Please leave any further comments or suggestions you have on the updated proposals (for example, ideas for how South Brooks could support local community, education or skills development initiatives).



Thank you and Q&A

0800 038 3486
info@southbrookssolarfarm.co.uk

South Brooks
Solar Farm



Summary of Q&A discussion

Q: Has the RSPB responded to the consultation?

A: We have been meeting with the RSPB since launch of the Project to understand their priorities and will continue to do so as the plans progress. For example, on the potential area for biodiversity in Parcel E and how this can be managed to align with local conservation objectives.

Q: Does the Project own all the land?

A: The Project would lease the land during the lifetime of the Project should consent be granted. Once the Project has been decommissioned, the land would be returned to the landowners.

Q: Local press outlets have commented that the website accessibility could be improved to ensure maps and consultation materials can be easily found

A: Thank you for passing on this feedback and we will take this away to investigate how we can make the consultation materials more prominent.

Q: Would the Project rely on powers of compulsory acquisition?

A: To ensure projects of national significance can be delivered, it is normal for compulsory acquisition powers to be included within a Development Consent Order. It is our strong preference to reach voluntary agreements with landowners and not rely on these powers for the project to be delivered.

Questions outside the scope of the webinar were taken away to respond directly.